

## F25MF



### Flat suction cup with cleats, mark free

- ▶ Suction cup of TPU, a mark free material that leaves no trace on the object being handled.
- ▶ Suitable for flat surfaces.
- ▶ Good stability and little inherent movement.
- ▶ Recommended when the lifting force is parallel to the surface of the object.

### Lifting forces & Technical data

Lifting force vertical to the surface, N, at vacuum level			Lifting force parallel to the surface, N, at vacuum level			Volume cm <sup>3</sup>	Min. curve radius mm	Max. vertical movement mm	Weight rubber part g
20 -kPa	60 -kPa	90 -kPa	20 -kPa	60 -kPa	90 -kPa				
6.3	24.5	35.5	9.0	24.5	36.3	1.1	23	1.5	1.7

### Material specifications

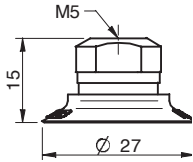
Material	Colour	Hardness °Shore A	Temperature range °C
Thermoelastic polyurethane, TPU	Transparent white	81	-20-80

### Material resistance

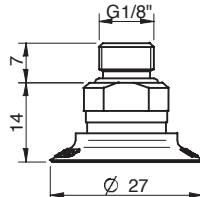
Wear resistance	Oil	Weather & Ozone	Hydrolysis	Petrol	Concentrated acids	Alcohol	Oxidation
Excellent	Excellent	Excellent	Poor	Poor	Poor	Good	Good

## Ordering information

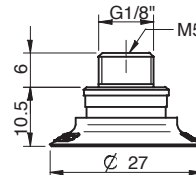
	Complete suction cups	Art. No.
A	Suction cup F25MF Thermoelastic polyurethane, M5 female	0101314
A	Suction cup F25MF Thermoelastic polyurethane, M5 female, with dual flow control valve	0101320
B	Suction cup F25MF Thermoelastic polyurethane, G1/8" male, with mesh filter	0101315
B	Suction cup F25MF Thermoelastic polyurethane, G1/8" male, with mesh filter and dual flow control valve	0101321
C	Suction cup F25MF Thermoelastic polyurethane, G1/8" male/M5 female, with mesh filter	0101319
D	Suction cup F25MF Thermoelastic polyurethane, 5xM5 female	0101318



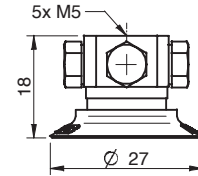
<Picture\_Text changed="2004-04-27 13:53:46">A



<Picture\_Text changed="2004-04-27 13:54:00">B

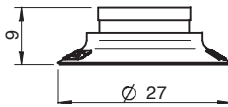


<Picture\_Text changed="2004-04-27 13:54:33">C



<Picture\_Text changed="2004-04-27 13:54:53">D

	Rubber parts	Art. No.
	Suction cup F25MF Thermoelastic polyurethane	0101140



<Picture\_Text changed="2004-04-27 13:55:16">

	Fittings	Art. No.
	Fitting M5 female	3250003
	Fitting M5 female, with dual flow control valve	3251001
	Fitting G1/8" male, with mesh filter	3250085
	Fitting G1/8" male, with mesh filter and dual flow control valve	3251002
	Fitting G1/8" male/M5 female, with mesh filter	0101152
	Fitting G1/8" male/M5 female, with dual flow control valve	3251004
	Fitting 5xM5 female	0100260
	Fitting 5xM5 female, with dual flow control valve	3251005
	Fitting G1/8" male/M5 female, PA	3150196