

L400



- ▶ Large vacuum flow
- ▶ Compact size and light weight compared to conventional mechanical pumps
- ▶ Short evacuation time
- ▶ Good for handling porous materials or if leakage is present

Supplied with vacuum gauge and manometer.

Technical data

| Description | Unit | Value |
|----------------------------|-------|------------------|
| Feed pressure, max. | MPa | 0.7 |
| Noise level, with silencer | dB(A) | 64–78 |
| Temperature range | °C | -20–80 |
| Weight | g | 6400–6900 |
| Material | | Al, PPS, NBR, SS |

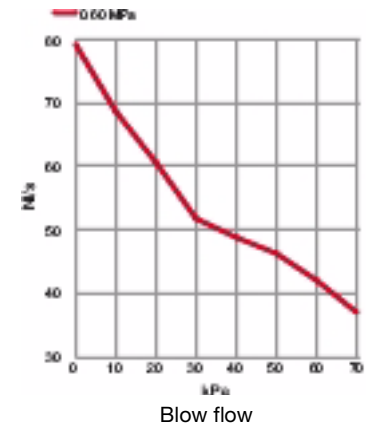
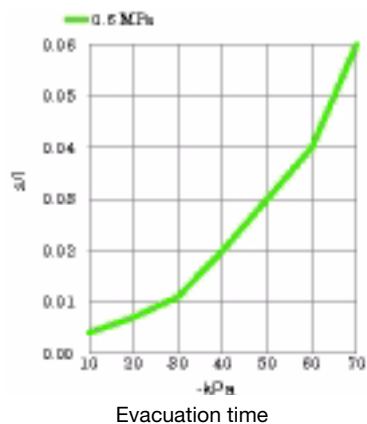
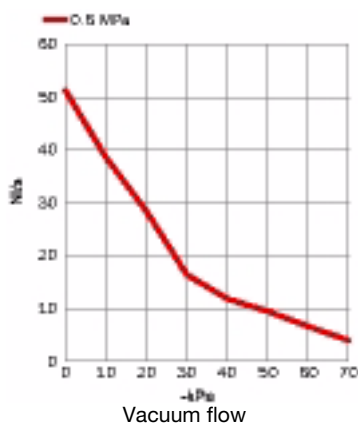
| Feed pressure MPa | Air consumption NI/s | Vacuum flow (NI/s) at different vacuum levels (-kPa) | | | | | | | | | | Max vacuum -kPa |
|----------------------|-------------------------|--|----|----|------|------|-----|-----|----|----|----|--------------------|
| | | 0 | 10 | 20 | 30 | 40 | 50 | 60 | 70 | 80 | 90 | |
| 0.60 | 28 | 51 | 39 | 28 | 16.4 | 11.9 | 9.5 | 6.7 | 4 | | | 75 |

Evacuation time

| Feed pressure MPa | Air consumption NI/s | Evacuation time (s/l) to reach different vacuum levels (-kPa) | | | | | | | | | Max vacuum -kPa |
|----------------------|-------------------------|---|-------|-------|-------|-------|-------|-------|----|----|--------------------|
| | | 10 | 20 | 30 | 40 | 50 | 60 | 70 | 80 | 90 | |
| 0.60 | 28 | 0.004 | 0.007 | 0.011 | 0.020 | 0.030 | 0.040 | 0.060 | | | 75 |

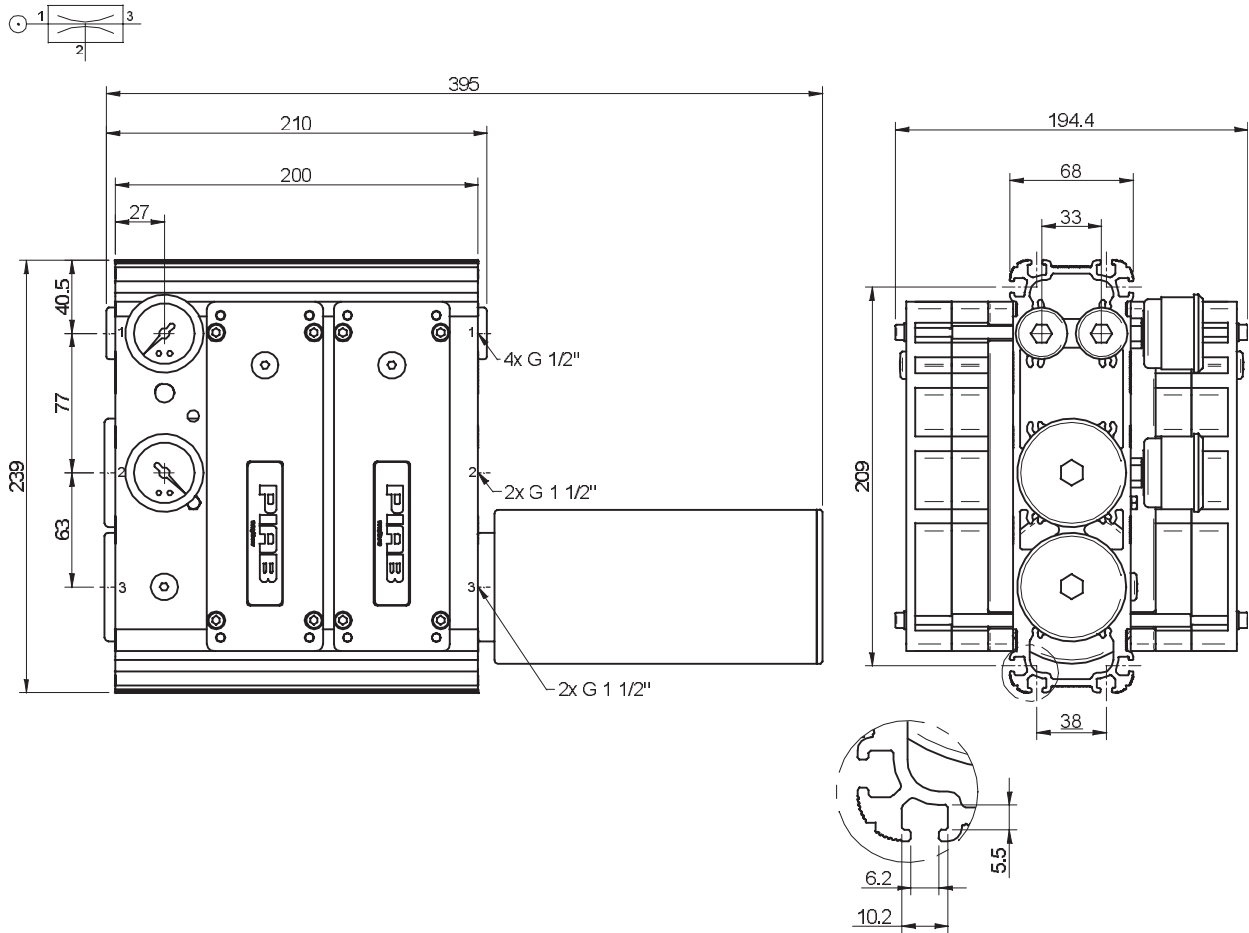
Blow flow

| Feed pressure MPa | Air consumption NI/s | Blow flow (NI/s) at different pressure levels (kPa) | | | | | | | | | Max pressure kPa |
|----------------------|-------------------------|---|------|------|------|------|------|------|------|----|---------------------|
| | | 0 | 10 | 20 | 30 | 40 | 50 | 60 | 70 | | |
| 0.60 | 28 | 79.3 | 68.7 | 60.6 | 51.9 | 49.0 | 46.2 | 42.2 | 37.0 | 70 | |



Ordering information

| Description | Art. No. |
|--|----------|
| Vacuum pump CLASSIC MP L400, conn. V, NBR sealings | 0103628 |
| Vacuum pump CLASSIC MP L400, conn. V, complete with mounting brackets and silencer | 0104144 |



Classic MP

Ordering information, accessories

| Description | Art. No. |
|-----------------------------|----------|
| Sealing kit CLASSIC MP, NBR | 0104634 |

For CLASSIC MP 150–240 1x 0104634, for CLASSIC MP 300–480 2x 0104634. The sealing kit includes flap valves, gaskets, compressed-air filters and O-rings.