

## Control Unit PPT/R



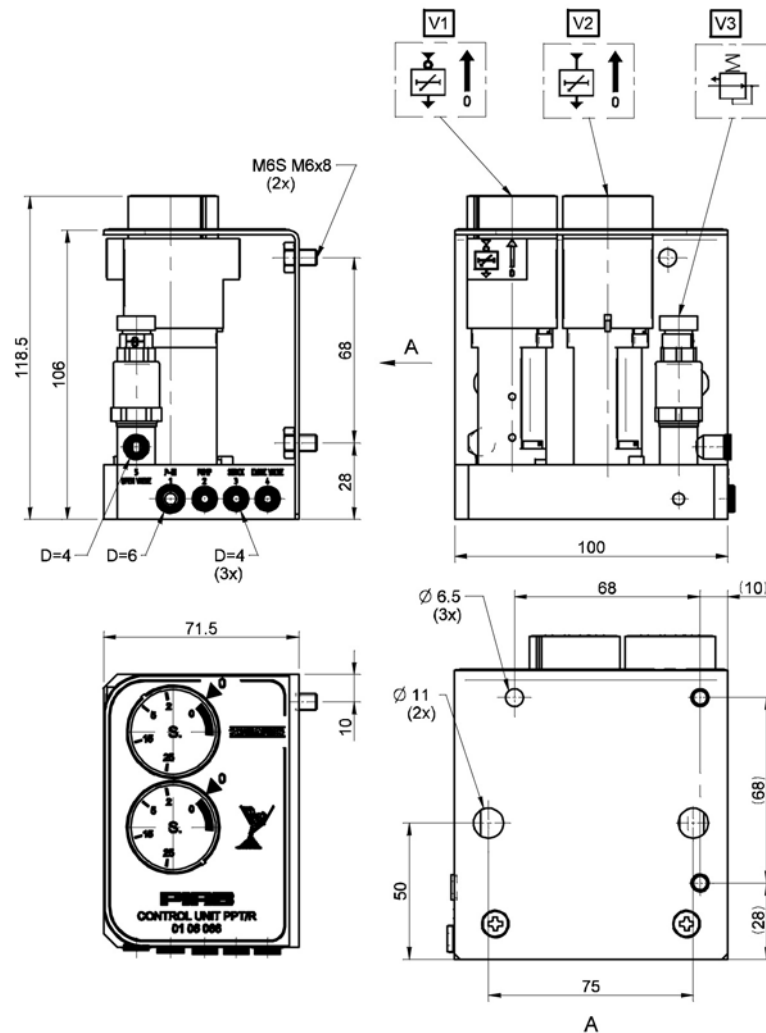
- ▶ Controls the functions of the conveyor, start/stop function is not included.
- ▶ Fully pneumatic.
- ▶ The maximum recommended distance between the conveyor and control unit is 10 metres when feed pressure is 0.6 MPa.
- ▶ Separate order for the tubing kit.

### Technical data

Description	Unit	Value
Feed pressure	MPa	0.4–0.6
Material		Al, PA
Temperature range	°C	0-50
Weight	kg	0.86

## Ordering information

Description	Art. No.
Control unit PPT/R	0106066



## Ordering information, accessories

Description	Art. No.
Nylon tubing kit, PPT/R C21	0106980
Nylon tubing kit, PPT/R C33	0103931
Nylon tubing kit, PPT/R C56	0106983