

Control Unit PPT/RS



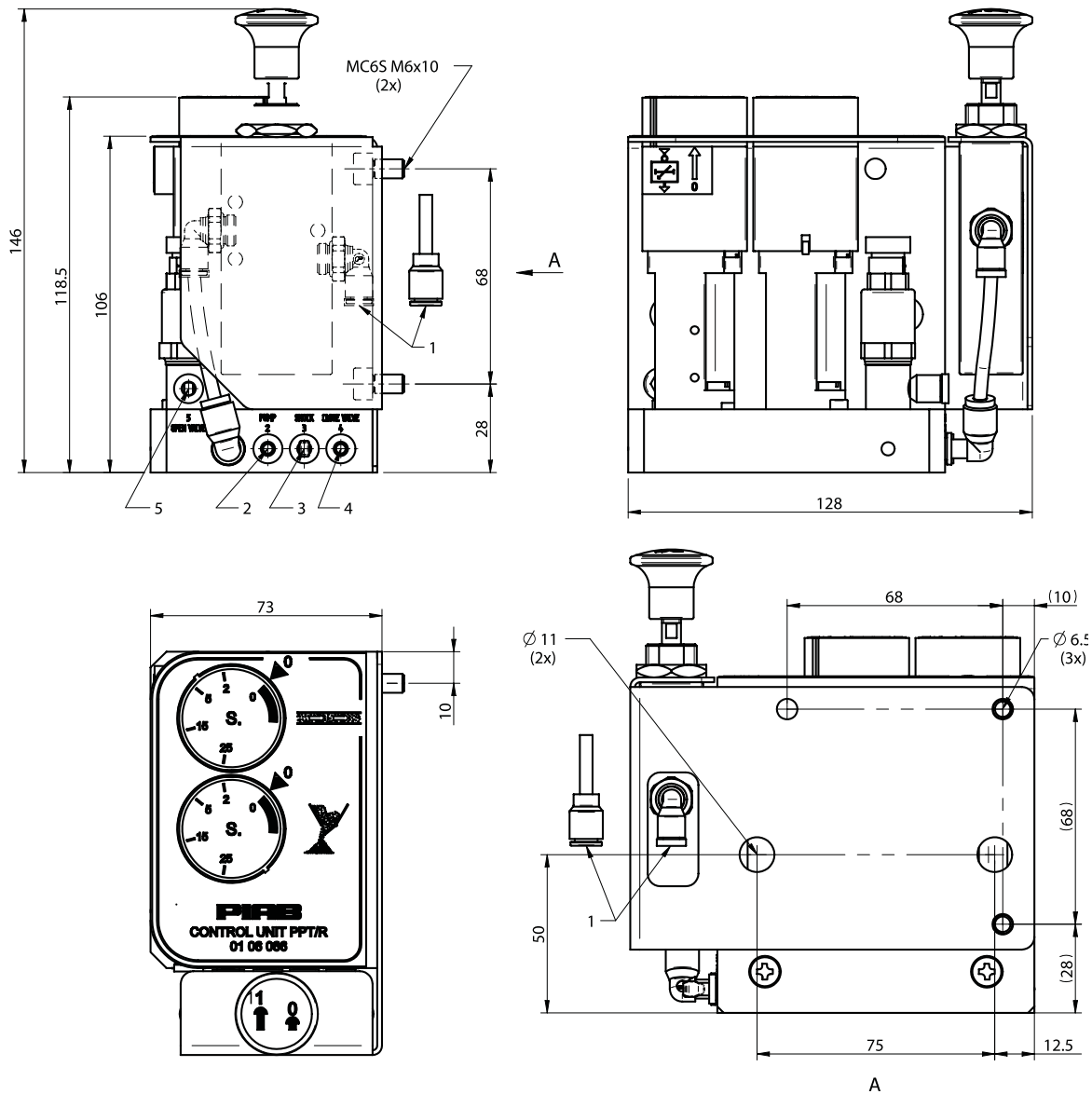
- ▶ Controls the functions of the conveyor.
- ▶ Fully pneumatic.
- ▶ The maximum recommended distance between the conveyor and control unit is 10 metres when feed pressure is 0.6 MPa.
- ▶ Separate order for the tubing kit.

Technical data

Description	Unit	Value
Feed pressure range	MPa	0.4–0.6
Material		Al, PA
Temperature range	°C	0–50
Weight	kg	1.30
Min particle size, filtered air	µm	5

Ordering information

Description	Art. No.
Control unit PPT/RS	0111636



Control units

Ordering information, accessories

Description	Art. No.
Nylon tubing kit, PPT/RS C2100-64, C2101-120	0117509
Nylon tubing kit, PPT/RS IC	0111591