

## piFLOW<sup>®</sup>p



- ▶ Easy to maintain and clean
- ▶ Designed mainly for industries handling food, chemical and pharmaceutical products
- ▶ Solution that contributes to dust-free conveying
- ▶ Steel quality ASTM 316L
- ▶ COAX<sup>®</sup> patented technology
- ▶ Low sound level
- ▶ The filter bag has filtration 5 µm
- ▶ Automatic filter cleaning
- ▶ Rubber and plastic materials in conveyor are antistatic
- ▶ All materials in contact with the conveyed product fulfil the requirements of FDA, USDA and 3-A

### Technical data

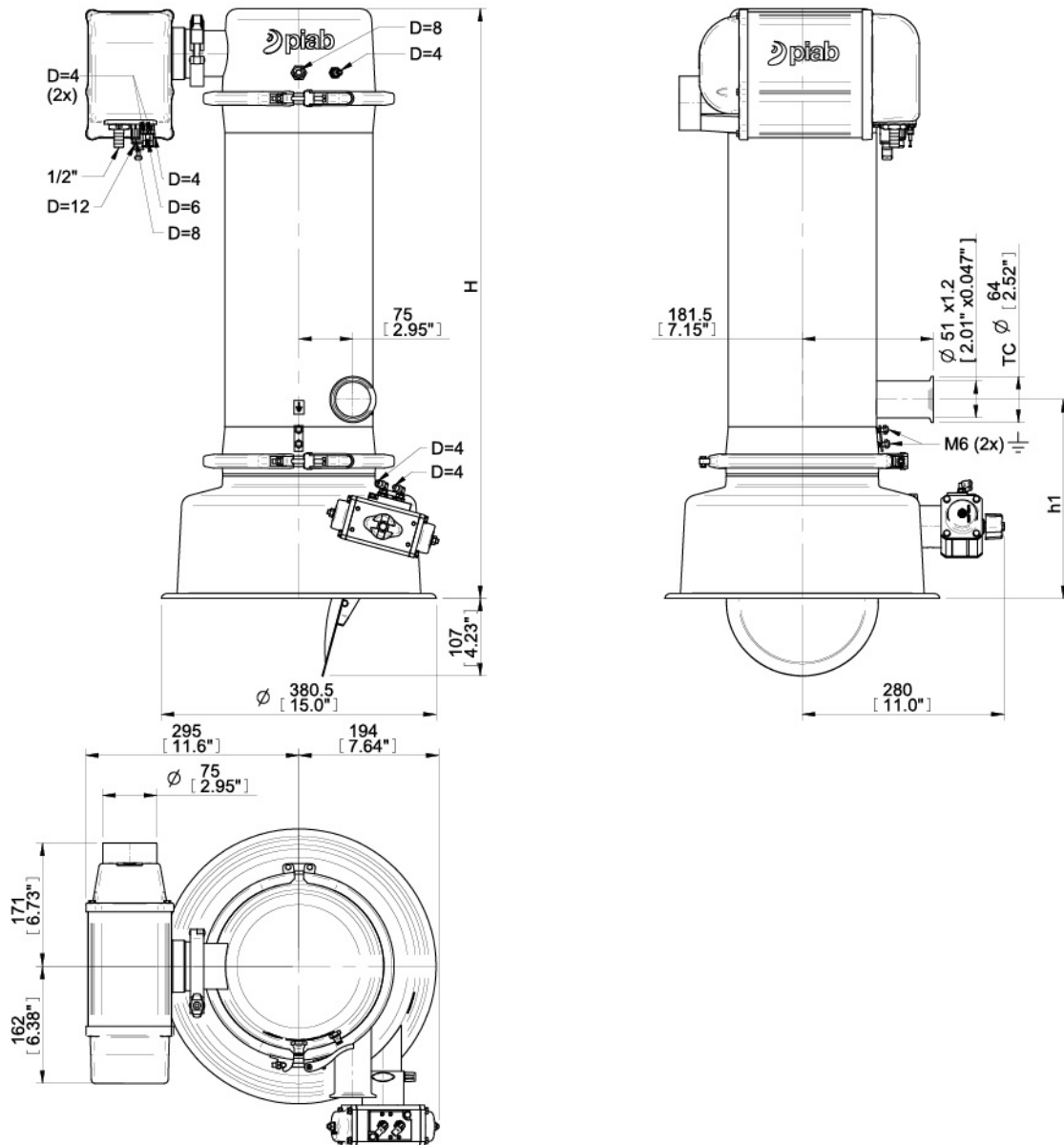
| Description                    | Unit           | Value  |
|--------------------------------|----------------|--|
| Material                       |                | ASTM 316L, EPDM, NBR, ePTFE, PET, PA, Al, SS, PP |
| Temperature range              | °C             | 0-60   |
| Weight                         | kg             | 22   |
| Finish                         | Ra             | 0.6  |
| Feed pressure, max.            | MPa            | 0.7  |
| Feed pressure range            | MPa            | 0.4-0.6  |
| Air consumption range          | NI/s           | 5-7  |
| Vacuum range                   | -kPa           | 60-75  |
| Noise level range              | dBA            | 69-77  |
| Filter area                    | m <sup>2</sup> | 0.09   |
| Min particle size              | µm             | 5.0  |
| Material batch volume          | l              | 3  |
| Feed pressure, max. - actuator | MPa            | 0.4  |
| Feed pressure range - control  | MPa            | 0.4-0.6  |

### Vacuum flow

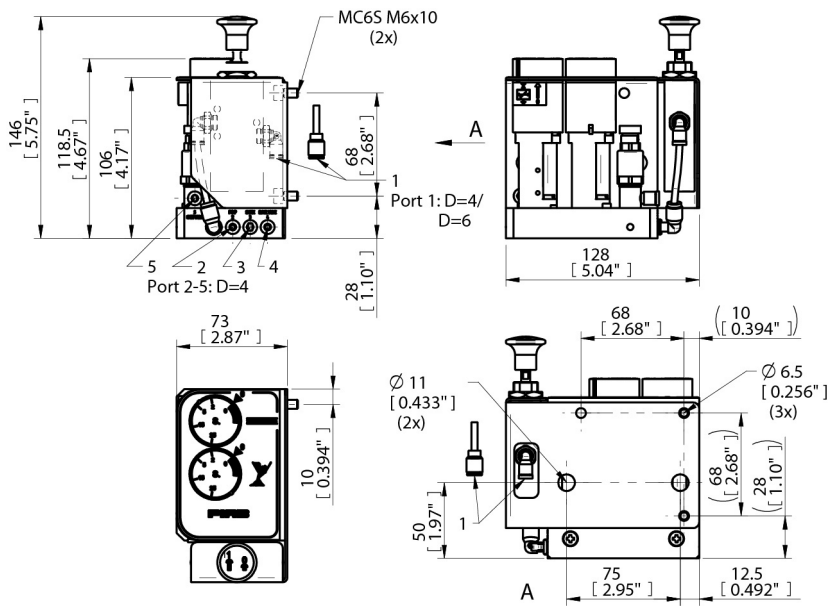
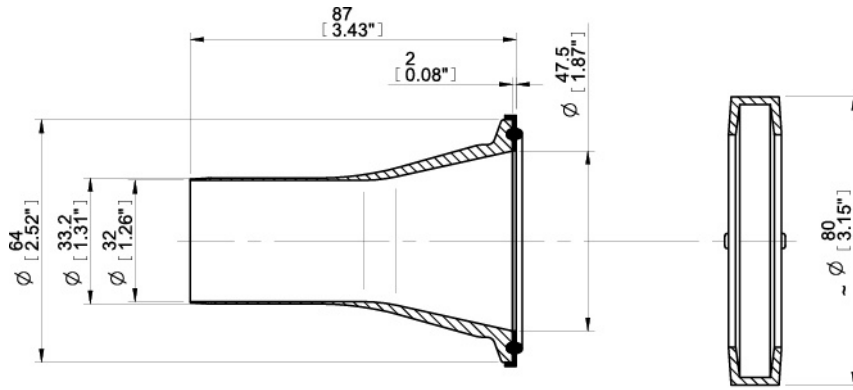
| Feed pressure<br>MPa | Air consumption<br>NI/s | Vacuum flow (NI/s) at different vacuum levels (-kPa) |      |      |     |     |     |      |      |    | Max vacuum<br>-kPa |
|----------------------|-------------------------|--|------|------|-----|-----|-----|------|------|----|--------------------|
|                      |                         | 0  | 10   | 20   | 30  | 40  | 50  | 60   | 70   |    |                    |
| 0.40                 | 5                       | 20.0   | 11.6 | 7.6  | 4.8 | 3.2 | 1.6 | 0.40 | -    | 60 |                    |
| 0.50                 | 6                       | 22.8   | 13.2 | 8.8  | 5.6 | 3.4 | 2.5 | 1.4  | 0.72 | 70 |                    |
| 0.60                 | 7                       | 24.0   | 14.0 | 10.4 | 6.8 | 3.6 | 2.4 | 2.0  | 1.4  | 75 |                    |

## Ordering information

| Description   | Product code                  |
|---|-------------------------------|
| piFLOW®p, piPREMIUM100, Textile filter 02, Hose Inlet Ø 32(1 1/4"), Volume 3L, Full opening, Control PPT/RS, Antistatic & AL, No special documentation, Manual GB | P.P100.TX2.32.3.F.RS.AAL.0.GB |



|    |             |
|----|-------------|
| H  | 671 [26.4"] |
| h1 | 276 [10.8"] |



### Ordering information, recommended spare parts

| Description                     | Art. No.  |
|---------------------------------|-----------|
| Textile filter D=125 L=220      | 0115355   |
| Filter seal 125 NBR             | 0103953/1 |
| Module Filter plate seal 21 NBR | 0103947/1 |

### Ordering information, recommended accessories

| Description                   | Art. No. |
|-------------------------------|----------|
| Pinch valve DN32 (8 bar)      | 3404607  |
| Pipe bend D=32 R=320 90° SS   | 3404612  |
| Pipe fitting 32 x 32          | 3404136  |
| Pipe fitting Y 3 x 32         | 3404146  |
| Pipe line emptying unit 32    | 0121504  |
| Feed adapter cpl              | 0117679  |
| Feed adapter cpl NBR          | 0117663  |
| Feed nozzle 32                | 3404001  |
| Feed station C Fluid 40 L NBR | 0117678  |
| Filter regulator to pump 1/2" | 0104490  |
| Container module 21/16        | 0104396  |
| Container module 21/9         | 0104397  |
| Container 21/9                | 0104395  |
| Mounting girdle cpl. 21       | 0128721  |