

## piFLOW<sup>®</sup>p



- ▶ Easy to maintain and clean
- ▶ Designed mainly for industries handling food, chemical and pharmaceutical products
- ▶ Solution that contributes to dust-free conveying
- ▶ Steel quality ASTM 316L
- ▶ COAX<sup>®</sup> patented technology
- ▶ Low sound level
- ▶ The filter bag has filtration 5 µm
- ▶ Automatic filter cleaning
- ▶ Rubber and plastic materials in conveyor are antistatic
- ▶ All materials in contact with the conveyed product fulfil the requirements of FDA, USDA and 3-A

### Technical data

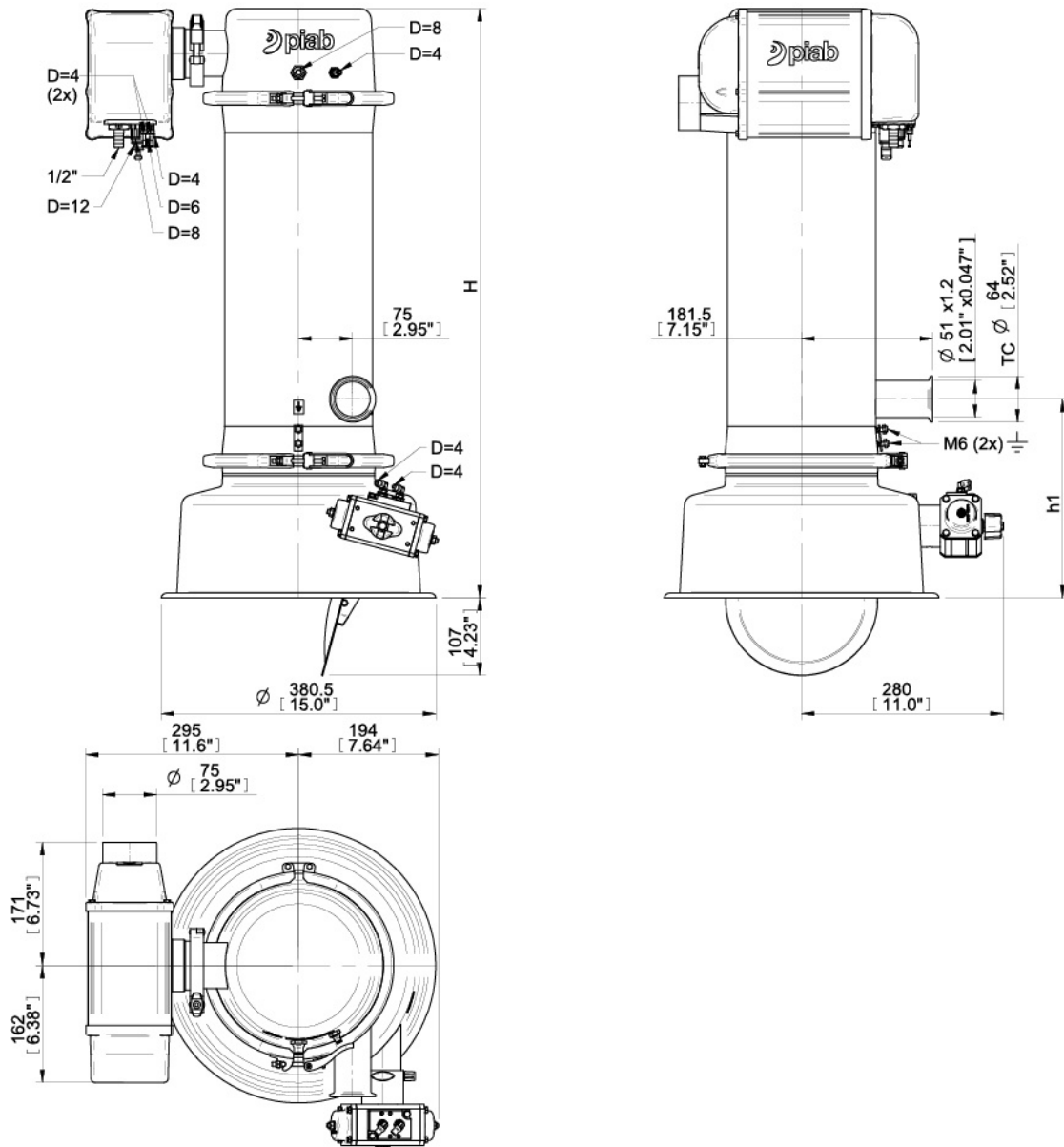
Description	Unit	Value
Material		ASTM 316L, NBR, ePTFE, PET, PA, Al, SS, PP
Temperature range	°C	0-60
Weight	kg	22
Finish	Ra	0.6
Feed pressure, max.	MPa	0.7
Feed pressure range	MPa	0.4-0.6
Air consumption range	NI/s	10-14
Vacuum range	-kPa	60-75
Noise level range	dBA	69-77
Filter area	m <sup>2</sup>	0.09
Min particle size	µm	5.0
Material batch volume	l	7
Feed pressure, max. - actuator	MPa	0.4
Feed pressure range - control	MPa	0.4-0.6

### Vacuum flow

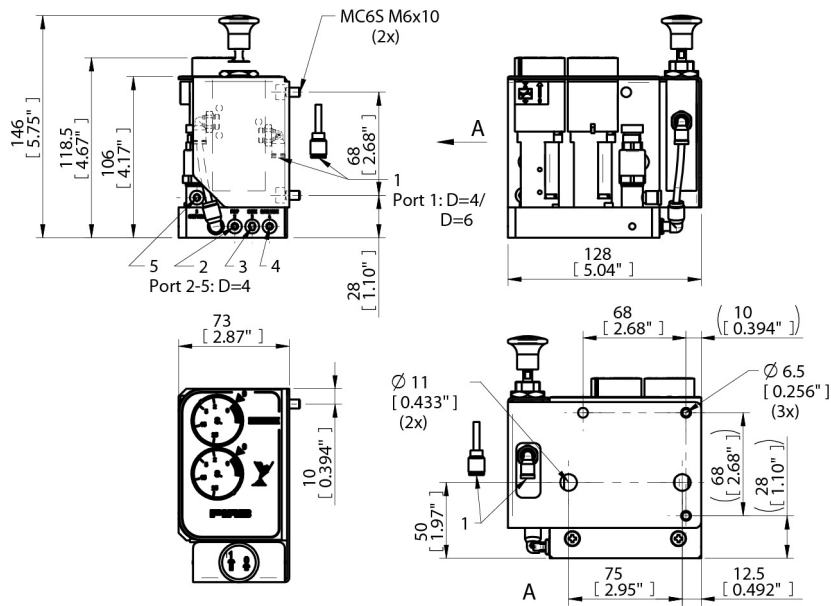
Feed pressure MPa	Air consumption NI/s	Vacuum flow (NI/s) at different vacuum levels (-kPa)									Max vacuum -kPa
		0	10	20	30	40	50	60	70		
0.40	10	40	23.2	15.2	9.6	6.4	3.2	0.80	-	60	
0.50	12	46	26	17.6	11.2	6.8	5.0	2.8	1.4	70	
0.60	14	48	28	20.8	13.6	7.2	4.8	4.0	2.8	75	

### Ordering information

Description	Product code
piFLOW®p, piPREMIUM200, Textile filter 02, TC Inlet Ø 51 (2"), Volume 7L, Full opening, Control PPT/RS, Antistatic & AL, No special documentation, Manual GB	P.P200.TX2.51T.7.F.RS.AAL.0.GB



H	796 [31.3"]
h1	401 [15.8"]



### Ordering information, recommended spare parts

Description	Art. No.
Textile filter D=125 L=220	0115355
Filter seal 125 NBR	0103953/1
Module Filter plate seal 21 NBR	0103947/1

### Ordering information, recommended accessories

Description	Art. No.
Pinch valve DN50 (4bar) hose connection	3404630
Pinch valve DN50(8bar) female thread	3404626
Pipe bend D=50 R=500 90° SS	3404660
Pipe fitting 75 x 50	3404120
Pipe fitting 50 x 50	3404121
Pipe fitting Y 3x50	3404144
Pipe line emptying unit 50	0121294
Feed adapter cpl	0117681
Feed adapter cpl NBR	0117667
Feed Nozzle Ø50	3104054
Feed station C Fluid 40 L NBR	0117678
Filter regulator to pump 1/2"	0104490
Container module 21/16	0104396
Container module 21/9	0104397
Container 21/9	0104395
Mounting girdle cpl. 21	0128721