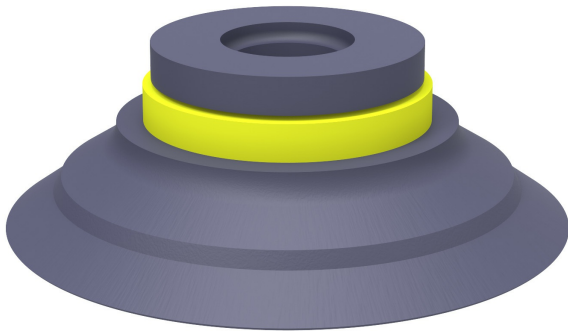


Suction cup F50-2 HNBR, F50-2.37



- Suitable for flat objects.
- Good stability and little inherent movement.
- Recommended when the lifting force is parallel to the surface of the object.
- Cleats prevent thin, sensitive objects from being deformed and gives extra friction when the lifting force is parallel.



General

Curve radius	2.17 in
Movement, vertical max.	0.09 in
Application	Glass handling, High/low temp cup (plastic), Mark Free, Plastic injection molded parts, Dry sheet metal
Material	HNBR
Suction cup model	F
Suction cup shape	Flat
Volume	0.61 in ³
Weight	0.49 oz

Fitting

Fitting size	None
Fitting style	None
Fitting type	None
Fitting option	None

Dimension

Height	0.69 in
Outer diameter	2.09 in
Outer diameter, actuated	2.15 in

Performance — lifting forces

		
6 -inHg	8.09 lbf	5.4 lbf
18 -inHg	16.6 lbf	8.99 lbf
27 -inHg	21.6 lbf	11.2 lbf

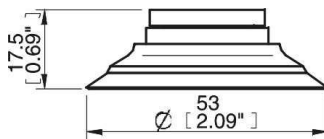
Material

	HNBR 75° Shore A
Color	Blue/grey
Hardness	75 °Shore A
Temperature	-22 – 284 °F

Material resistance

	HNBR 75° Shore A
Alcohol	++
Concentrated acids	+
Ethanol	N/A
Hydrolysis	++
Methanol	N/A
Oil	+++
Oxidation	+++
Gasoline	+++
Wear resistance	+++
Weather and ozone	+++

Dimensional drawings



Accessories

	Part no.
Fitting G3/8" male, 50, with mesh filter and dual flow control valve	05DD
Fitting G3/8" male, 50, with mesh filter	05AD
Fitting G1/4" male, with dual flow control valve	05DB
Fitting G1/4" male, 50, with mesh filter	05AB
Fitting 5x1/8" NPSF female, 50, with dual flow control valve	05DF
Fitting 5x1/8" NPSF female, 50	05AF
Fitting 3/8" NPT male, with mesh filter	05AE
Fitting 3/8" NPT male, with dual flow control valve	05DE
Fitting 1/8" NPSF female, 50, with mesh filter	05AG
Fitting 1/8" NPSF female, 50, with dual flow control valve	05DA
Fitting 1/8" NPSF female, 50, with cone valve	05UV
Fitting 1/8" NPSF female, 50, PA	05CA
Fitting 1/8" NPSF female, 50	05AA
Fitting 1/4" NPT male, with mesh filter	05AC
Fitting 1/4" NPT male, with dual flow control valve	05DC