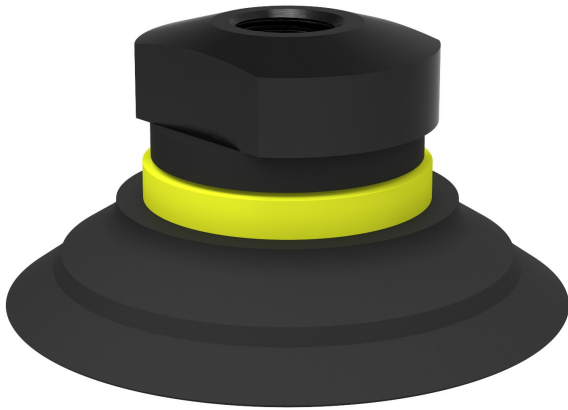


Suction cup F50-2 Nitrile-PVC, 1/8" NPSF female, with mesh filter, F50-2.30.05AG



- Suitable for flat objects.
- Good stability and little inherent movement.
- Recommended when the lifting force is parallel to the surface of the object.
- Cleats prevent thin, sensitive objects from being deformed and gives extra friction when the lifting force is parallel.



General

Curve radius	2.17 in
Movement, vertical max.	0.09 in
Application	Dry sheet metal
Material	Nitrile-PVC (NPV)
Suction cup model	F
Suction cup shape	Flat
Volume	0.61 in ³
Weight	0.49 oz

Fitting

Fitting size	1/8"
Fitting style	Female
Fitting type	NPSF-thread
Fitting option	Filter mesh

Dimension

Height	1.04 in
Outer diameter	2.09 in
Outer diameter, actuated	2.15 in

Performance — lifting forces

		
6 -inHg	8.09 lbf	5.4 lbf
18 -inHg	16.6 lbf	8.99 lbf
27 -inHg	21.6 lbf	11.2 lbf

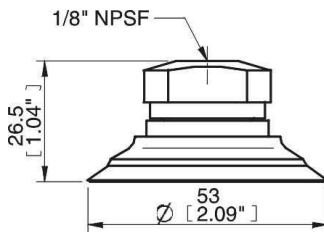
Material

	Nitrile-PVC (NPV)
Color	Black
Hardness	50 Shore A
Temperature	32 – 194 °F

Material resistance

	Nitrile-PVC (NPV)
Alcohol	++
Concentrated acids	+
Ethanol	N/A
Hydrolysis	++
Methanol	N/A
Oil	+++
Oxidation	++
Gasoline	+++
Wear resistance	+++
Weather and ozone	++

Dimensional drawings



Spare parts

	Part no.
Suction cup F50-2 Nitrile-PVC	F50-2.30
Fitting 1/8" NPSF female, 50, with mesh filter	05AG
Cone valve for F50-2	31.50.057

Accessories

	Part no.
Suction cup F50-2 Silicone	F50-2.20
Suction cup F50-2 HNBR	F50-2.37
Suction cup F50-2 Nitrile-PVC	31.50.241P
Suction cup F50-2 Silicone, for fitting with cone valve	31.50.241S
Fitting G3/8" male, 50, with mesh filter and dual flow control valve	05DD
Fitting G3/8" male, 50, with mesh filter	05AD
Fitting G1/4" male, with dual flow control valve	05DB
Fitting G1/4" male, 50, with mesh filter	05AB
Fitting 5x1/8" NPSF female, 50, with dual flow control valve	05DF
Fitting 5x1/8" NPSF female, 50	05AF
Fitting 3/8" NPT male, with mesh filter	05AE
Fitting 3/8" NPT male, with dual flow control valve	05DE
Fitting 1/8" NPSF female, 50, with dual flow control valve	05DA
Fitting 1/8" NPSF female, 50, with cone valve	05UV
Fitting 1/8" NPSF female, 50, PA	05CA
Fitting 1/8" NPSF female, 50	05AA
Fitting 1/4" NPT male, with mesh filter	05AC
Fitting 1/4" NPT male, with dual flow control valve	05DC