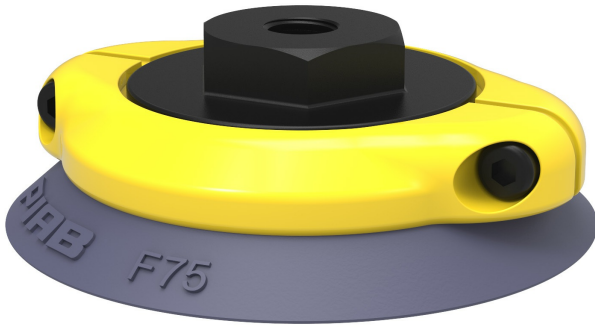


Suction cup F75 HNBR, 1/8" NPSF female, with mesh filter, F75.37.07NA

- Suitable for flat objects.
- Good stability and little inherent movement.
- Recommended when the lifting force is parallel to the surface of the object.
- Cleats prevent thin, sensitive objects from being deformed and gives extra friction when the lifting force is parallel.



General

Curve radius	5.91 in
Movement, vertical max.	0.12 in
Application	Glass handling, High/low temp cup (plastic), Mark Free, Plastic injection molded parts, Dry sheet metal
Material	HNBR
Suction cup model	F
Suction cup shape	Flat
Volume	1.22 in ³
Weight	0.81 oz

Fitting

Fitting size	1/8"
Fitting style	Female
Fitting type	NPSF-thread
Fitting option	Filter mesh

Dimension

Height	1.02 in
Outer diameter	3.03 in
Outer diameter, actuated	3.11 in

Performance — lifting forces

		
6 -inHg	18 lbf	13.5 lbf
18 -inHg	45 lbf	24.7 lbf
27 -inHg	60.7 lbf	31.5 lbf

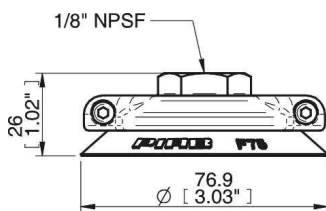
Material

	HNBR 75° Shore A
Color	Blue/grey
Hardness	75 °Shore A
Temperature	-22 – 284 °F

Material resistance

	HNBR 75° Shore A
Alcohol	++
Concentrated acids	+
Ethanol	N/A
Hydrolysis	++
Methanol	N/A
Oil	+++
Oxidation	+++
Gasoline	+++
Wear resistance	+++
Weather and ozone	+++

Dimensional drawings



Spare parts

	Part no.
Suction cup F75 HNBR	F75.37
Fitting 75, 1/8" NPSF female, clamp ring with mesh filter	07NA

Accessories

	Part no.
Suction cup F75 Silicone	F75.20
Suction cup F75 Nitrile-PVC	F75.30
Fitting G1/2" female AL, with mesh filter	07UD
Fitting 75, G3/8" female, clamp ring with mesh filter	07ND
Fitting 75, G3/8" female, with cone valve	07VD
Fitting 75, G1/2" female, clamp ring with mesh filter	07NF
Fitting 75, G1/2" female, with cone valve	07VF
Fitting 75, 3/8" NPSF female, with mesh filter	07NE
Fitting 1/8" NPSF female AL, with mesh filter	07UA
Fitting 1/4" NPT female AL, with mesh filter & 10-32 addl. conn.	07UH