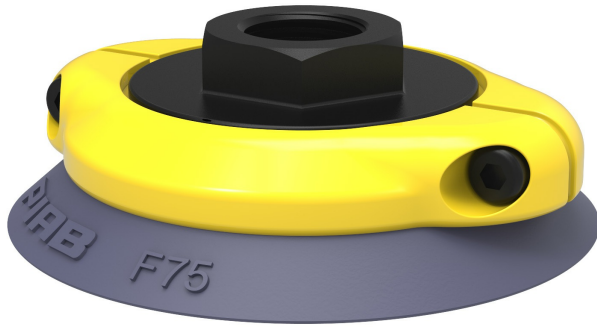


# Suction cup F75 HNBR, 3/8" NPSF female, with mesh filter, F75.37.07NE

- Suitable for flat objects.
- Good stability and little inherent movement.
- Recommended when the lifting force is parallel to the surface of the object.
- Cleats prevent thin, sensitive objects from being deformed and gives extra friction when the lifting force is parallel.



## General

Curve radius	5.91 in
Movement, vertical max.	0.12 in
Application	Glass handling, High/low temp cup (plastic), Mark Free, Plastic injection molded parts, Dry sheet metal
Material	HNBR
Suction cup model	F
Suction cup shape	Flat
Volume	1.22 in <sup>3</sup>
Weight	0.81 oz

## Fitting

Fitting size	1/8"
Fitting style	Female
Fitting type	NPSF-thread
Fitting option	Filter mesh

## Dimension

Height	1.02 in
Outer diameter	3.03 in
Outer diameter, actuated	3.11 in

## Performance — lifting forces

		
6 -inHg	18 lbf	13.5 lbf
18 -inHg	45 lbf	24.7 lbf
27 -inHg	60.7 lbf	31.5 lbf

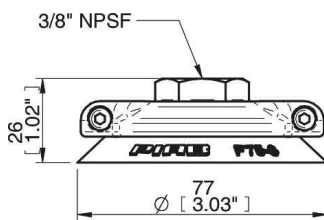
## Material

	HNBR 75° Shore A
Color	Blue/grey
Hardness	75 °Shore A
Temperature	-22 – 284 °F

## Material resistance

	HNBR 75° Shore A
Alcohol	++
Concentrated acids	+
Ethanol	N/A
Hydrolysis	++
Methanol	N/A
Oil	+++
Oxidation	+++
Gasoline	+++
Wear resistance	+++
Weather and ozone	+++

## Dimensional drawings



## Spare parts

	Part no.
Suction cup F75 HNBR	F75.37
Fitting 75, 3/8" NPSF female, with mesh filter	07NE

## Accessories

	Part no.
Suction cup F75 Silicone	F75.20
Suction cup F75 Nitrile-PVC	F75.30
Fitting G1/2" female AL, with mesh filter	07UD
Fitting 75, G3/8" female, clamp ring with mesh filter	07ND
Fitting 75, G3/8" female, with cone valve	07VD
Fitting 75, G1/2" female, clamp ring with mesh filter	07NF
Fitting 75, G1/2" female, with cone valve	07VF
Fitting 75, 1/8" NPSF female, clamp ring with mesh filter	07NA
Fitting 1/8" NPSF female AL, with mesh filter	07UA
Fitting 1/4" NPT female AL, with mesh filter & 10-32 addl. conn.	07UH