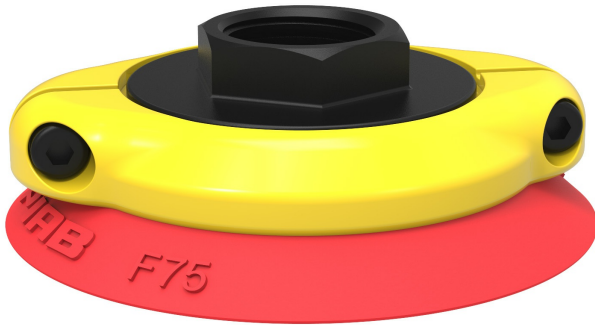


Suction cup F75 Silicone, G1/2" female, with cone valve, F75.20.07VF



- Suitable for flat objects.
- Good stability and little inherent movement.
- Recommended when the lifting force is parallel to the surface of the object.
- Cleats prevent thin, sensitive objects from being deformed and gives extra friction when the lifting force is parallel.



General

Curve radius	5.91 in
Movement, vertical max.	0.12 in
Application	Dry sheet metal
Material	Silicone (SIL)
Suction cup model	F
Suction cup shape	Flat
Volume	1.22 in ³
Weight	0.81 oz

Fitting

Fitting size	1/2"
Fitting style	Female
Fitting type	G-thread
Fitting option	Cone valve

Dimension

Outer diameter, actuated	3.11 in
--------------------------	---------

Performance — lifting forces

		
6 -inHg	18 lbf	13.5 lbf
18 -inHg	45 lbf	24.7 lbf
27 -inHg	60.7 lbf	31.5 lbf

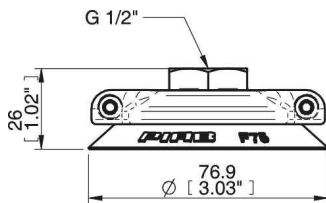
Material

	Silicone (SIL)
Color	Red
Hardness	50 Shore A
Temperature	-40 – 392 °F

Material resistance

	Silicone (SIL)
Alcohol	++
Concentrated acids	-
Ethanol	N/A
Hydrolysis	+
Methanol	N/A
Oil	-
Oxidation	+++
Gasoline	-
Wear resistance	++
Weather and ozone	+++

Dimensional drawings



Spare parts

	Part no.
Suction cup F75 Silicone	F75.20
Fitting 75, G1/2" female, with cone valve	07VF
Cone Valve for Fitting 75	01.00.729

Accessories

	Part no.
Suction cup F75 Nitrile-PVC	F75.30
Suction cup F75 HNBR	F75.37
Fitting 75, G3/8" female, clamp ring with mesh filter	07ND
Fitting 75, G3/8" female, with cone valve	07VD
Fitting 75, G1/2" female, clamp ring with mesh filter	07NF
Fitting 75, 3/8" NPSF female, with mesh filter	07NE
Fitting 75, 1/8" NPSF female, clamp ring with mesh filter	07NA