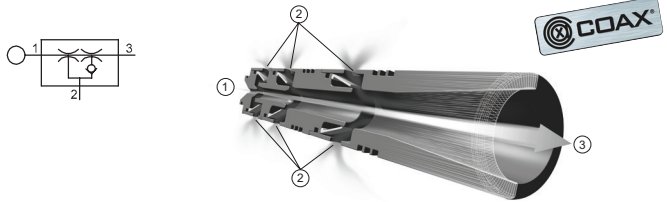


## 1. INSTALLATION / CONNECTIONS



### RECOMMENDED HOSE DIMENSIONS IN MM [IN.] (INTERNAL DIAMETER)

Connections		COAX® cartridge Bi03-2, Si02-2, Ti05-2, Xi2.5-2
1.	Compressed air	≥ 2,5 [0.098]
2.	Vacuum	≥ 2,5 [0.098]
3.	Exhaust	≥ 8 [0.31]

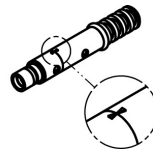
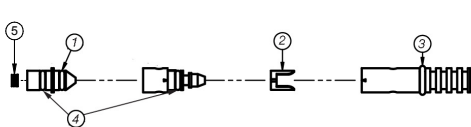
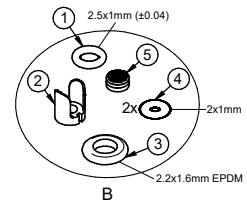
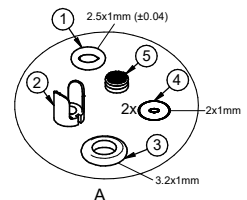
Applies to hoses up to 2 m [6.6 feet] long.

### FEED PRESSURE, VACUUM LEVEL AND EXHAUST PRESSURE

COAX® cartridge	Feed pressure MPa [psi]	Max. vacuum level -kPa [inHg]	Max. exhaust pressure MPa [psi]
Bi03-2 / Bi03-2 oz. resistant	0,18-0,22 [26.1-31.9]	82 [24.2]	----
Si02-2	0,6 [87]	75 [22.2]	0,13 [18.9]
Ti05-2	0,4-0,6 [58-87]	75-84 [22.2-24.8]	----
Xi2.5-2	0,5 [72.5]	92 [27.2]	0,09 [13.1]

## 2. SPARE PARTS AND ACCESSORIES

Description	Art. No.
A Spare part kit COAX® cartridge MICRO (3pcs 0109533)	0201135
B Spare part kit COAX® cartridge MICRO, oz. resistant (3pcs 0125842)	0201136

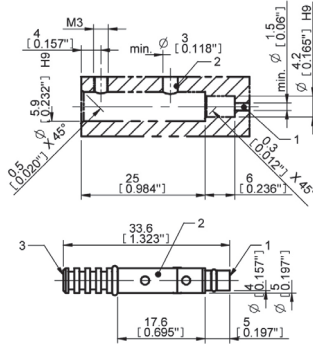


## 3. CLEANING

Rinse in water or use compressed air to blow off. Let dry before reinstalling.

## 4. DIMENSIONS

Bi03-2  
Si02-2  
Ti05-2  
Xi2.5-2



Bi03-2 C incl holding cap  
Si02-2 C incl holding cap  
Ti05-2 C incl holding cap  
Xi2.5-2 C incl holding cap

